



**TC UV 12 80**

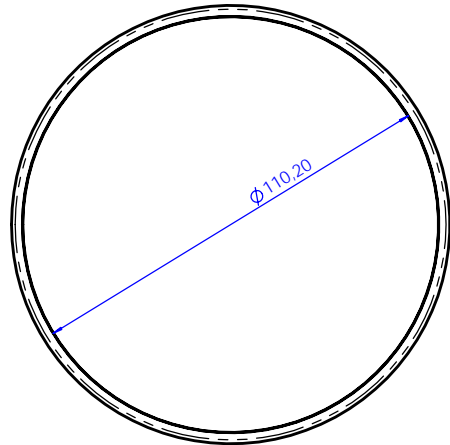
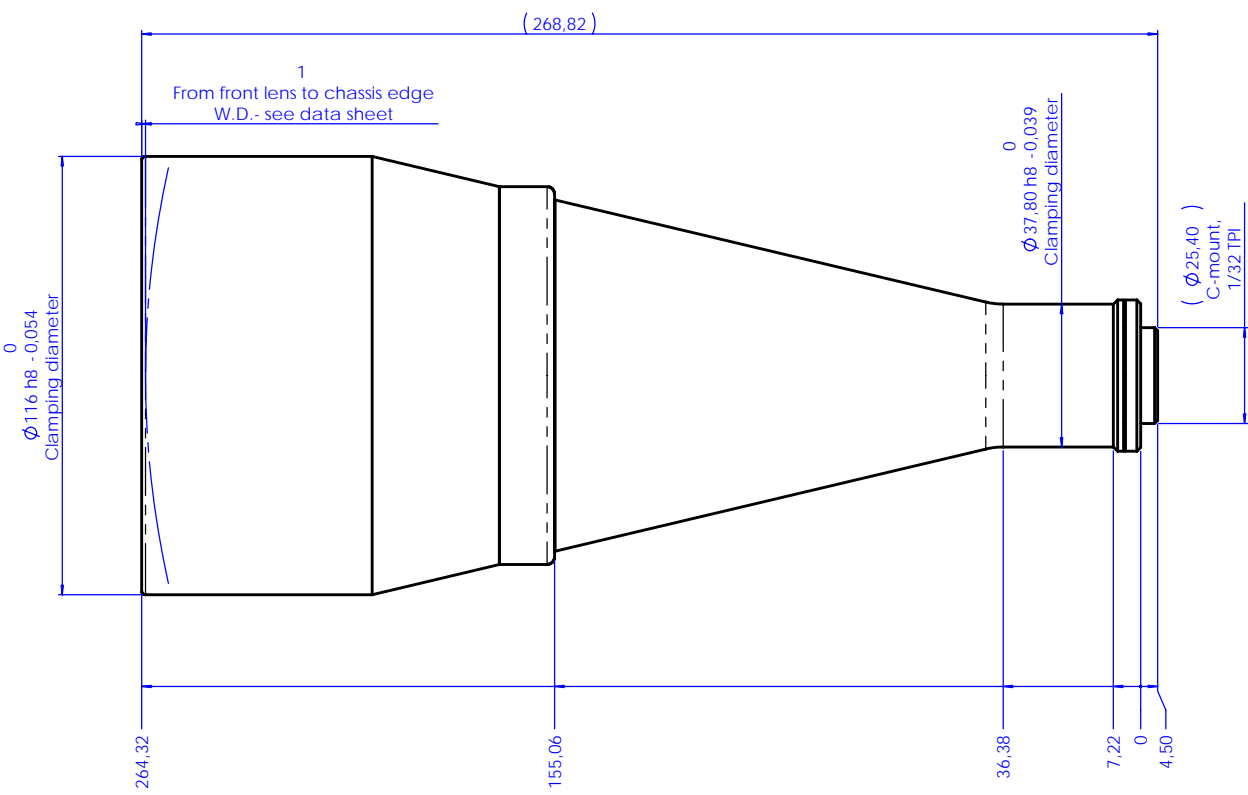
# UV Bi-Telecentric Lens for detectors up to 1/2"



part number		TC UV 12 80
<b>Range</b>	(nm)	365 / 420
<b>Magnification</b>		0,080 +/- 3%
<b>Object Field</b>	(mm x mm)	
with 1/4" (3,6 x 2,7) detector		44,8 x 33,6
with 1/3" (4,8 x 3,6) detector		59,8 x 44,8
with 1/2" (6,4 x 4,8) detector		79,7 x 59,8
with 1/1.8" (7,13 x 5,37) detector		88,8 x 66,9
with 2/3" (8,8 x 6,6) detector		diam. = 82,2
	(mm)	221,0 +/- 7
<b>Working F-number</b>		8
<b>Telecentricity</b>	(degree)	< 0,08
<b>Distortion</b>	(%)	< 0,08
<b>Field Depth</b>	(mm)	102,0
<b>CTF @70 lp/mm</b>	(%)	> 40
<b>Image side N.A.</b>		0,0620
<b>Object side N.A.</b>		0,0050
<b>Mount</b>		C
<b>Length</b>	(mm)	264,3
<b>External diameter</b>	(mm)	116,0
<b>Weight</b>	(g)	1560

Possible vignetting at the image corners with 1/1.8" detectors

Rev No.	Description	Date	Name
A	First light	09/05/08	A.Vismara



Material	N.A.	Mass	1.56 kg	Scale	1:1																																						
Surface treatment	N.A.																																										
Geometrical tolerance (ISO 2768-2)		Project-Prod.Item/Instrument <b>Telecentric lens UV 12 80</b>																																									
<table border="1"> <thead> <tr> <th colspan="2">Linear tolerance (ISO 2768-2)</th> <th>Class</th> <th>K</th> <th>Undimensioned Bevels</th> <th rowspan="2">1x45°</th> </tr> <tr> <th>Class</th> <th>Class</th> <th>m</th> <th>mm</th> <th>mm</th> </tr> </thead> <tbody> <tr> <td>0.5</td> <td>&gt;3-</td> <td>&gt;6-</td> <td>&gt;30-</td> <td>&gt;120</td> <td>&gt;400-</td> <td>&gt;1000</td> <td>&gt;2000</td> <td rowspan="2">Undimensioned radii</td> <td rowspan="2">R 0.5</td> </tr> <tr> <td>±3</td> <td>±6</td> <td>±30</td> <td>±120</td> <td>±400</td> <td>±1000</td> <td>±2000</td> <td>±4000</td> </tr> <tr> <td>±0.1</td> <td>±0.1</td> <td>±0.2</td> <td>±0.3</td> <td>±0.5</td> <td>±0.8</td> <td>±1.2</td> <td>±2</td> <td colspan="2">         Description  <b>Assembly</b> </td> </tr> </tbody> </table>		Linear tolerance (ISO 2768-2)		Class	K	Undimensioned Bevels	1x45°	Class	Class	m	mm	mm	0.5	>3-	>6-	>30-	>120	>400-	>1000	>2000	Undimensioned radii	R 0.5	±3	±6	±30	±120	±400	±1000	±2000	±4000	±0.1	±0.1	±0.2	±0.3	±0.5	±0.8	±1.2	±2	Description <b>Assembly</b>		Date Drawing No.		Sheet 1/1
Linear tolerance (ISO 2768-2)		Class	K	Undimensioned Bevels	1x45°																																						
Class	Class	m	mm	mm																																							
0.5	>3-	>6-	>30-	>120	>400-	>1000	>2000	Undimensioned radii	R 0.5																																		
±3	±6	±30	±120	±400	±1000	±2000	±4000																																				
±0.1	±0.1	±0.2	±0.3	±0.5	±0.8	±1.2	±2	Description <b>Assembly</b>																																			
		Designed 09/05/08 A.Vismara		Drawing No. <b>02630-0-A</b>																																							
Draw 09/05/08 A.Vismara		Checked x C.Sedazzari		Name <b>02630-0-A</b>																																							
www.opto-engineering.com OPTO ENGINEERING S.r.l. - 46100 Mantova Italy - Via Cremona, 29/2 - Tel. +39 0376 263565 - e-mail: info@opto-engineering.com - http://www.opto-engineering.com																																											