



TC 23 12

0,735x Bi-Telecentric lens for Detectors up to 2/3"



part number		TC 23 12
Magnification		0,735 +/- 3%
Field Of View	(mm x mm)	
with 1/4" (3,6 x 2,7) detector		4,9 x 3,7
with 1/3" (4,8 x 3,6) detector		6,5 x 4,9
with 1/2" (6,4 x 4,8) detector		8,7 x 6,5
with 1/1.8" (7,13 x 5,37) detector		9,7 x 7,3
with 2/3" (8,8 x 6,6) detector		12,0 x 9,0
Working Distance	(mm)	53,9 +/- 2
Working F-number		11
Telecentricity	(degree)	< 0,12
Distortion	(%)	< 0,10
Field Depth	(mm)	1,2
CTF @70 lp/mm	(%)	> 25
Image side N.A.		0,0450
Object side N.A.		0,0330
Mount		C
Length	(mm)	60,3
External diameter	(mm)	28,0
Weight	(g)	160

ACCESSORIES AND OPTIONS:

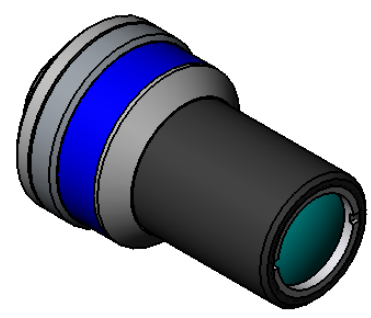
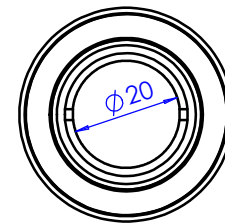
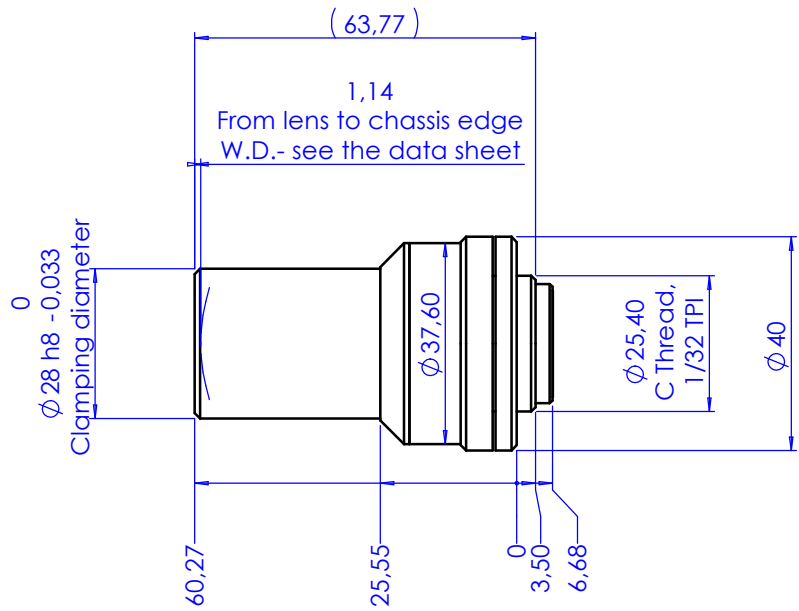


Collimated/Telecentric illumination:
Compatible with LTCL23 illuminator;
green light suggested.



Clamping Mechanics:
Compatible with CMH023.

Rev No.	Description	Date	Name
A	First light	09/01/12	A.Vismara



Material	N.A.		Mass	0.160 kg	Scale	1:1
Surface treatment	N.A.		Project-Prod.item/Instrument Telecentric lens 23 12			
Geometrical tolerance (ISO 2768-2)		Class	K	Description		
Linear tolerance (ISO 2768-2)		Class	m	Undimensioned bevels	1x45°	ASSEMBLY
0,5 +3	>3+ 6	>6+ 30	>30+ 120	>120 +400	>400+ 1000	
±0.1	±0.1	±0.2	±0.3	±0.5	±0.8	±1.2
Class		K	Description			
Class		m	Date	Name	Drawing No.	Sheet
Class		m	09/01/12	A.Vismara	02051-0-A	1/1
Class		m	09/01/12	A.Vismara	Reproduction forbidden without specific authorization	
Class		m	X	C. Sedazzari	Reproduction forbidden without specific authorization	