



**TC 23 04**

## 2x Bi-Telecentric lens for detectors up to 2/3"



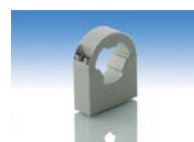
part number		TC 23 04
<b>Magnification</b>		2,000 +/- 3%
<b>Field Of View</b>		
with 1/4" (3,6 x 2,7) detector	(mm)	1,8 x 1,4
with 1/3" (4,8 x 3,6) detector		2,4 x 1,8
with 1/2" (6,4 x 4,8) detector		3,2 x 2,4
with 1/1.8" (7,13 x 5,37) detector		3,6 x 2,7
with 2/3" (8,8 x 6,6) detector		4,4 x 3,3
<b>Working Distance</b>	(mm)	57,1 +/- 2
<b>Working F-number</b>		11
<b>Telecentricity</b>	(degree)	< 0,08
<b>Distortion</b>	(%)	< 0,08
<b>Field Depth</b>	(mm)	0,2
<b>CTF @70 lp/mm</b>	(%)	> 30
<b>Image side N.A.</b>		0,0450
<b>Object side N.A.</b>		0,0900
<b>Mount</b>		C
<b>Length</b>	(mm)	101,4
<b>External diameter</b>	(mm)	28,0
<b>Weight</b>	(g)	130

### ACCESSORIES AND OPTIONS:



#### Collimated/Telecentric illumination:

Compatible with LTCL23 illuminator;  
green light suggested.



#### Clamping Mechanics:

Compatible with CMH023.

