



**TC 12 36**

# 0,18x Bi-Telecentric lens for detectors up to 1/2"



part number		TC 12 36
<b>Magnification</b>		0,177 +/- 3%
<b>Field Of View</b>	(mm x mm)	
with 1/4" (3,6 x 2,7) detector		20,3 x 15,2
with 1/3" (4,8 x 3,6) detector		27,1 x 20,3
with 1/2" (6,4 x 4,8) detector		36,1 x 27,1
with 1/1.8" (7,13 x 5,37) detector		40,2 x 30,3
with 2/3" (8,8 x 6,6) detector		diam. = 37,3
<b>Working Distance</b>	(mm)	103,5 +/- 3
<b>Working F-number</b>		8
<b>Telecentricity</b>	(degree)	< 0,08
<b>Distortion</b>	(%)	< 0,10
<b>Field Depth</b>	(mm)	21,0
<b>CTF @70 lp/mm</b>	(%)	> 40
<b>Image side N.A.</b>		0,0620
<b>Object side N.A.</b>		0,0110
<b>Mount</b>		C
<b>Length</b>	(mm)	145,0
<b>External diameter</b>	(mm)	61,0
<b>Weight</b>	(g)	480

Possible vignetting at the image corners with 1/1.8" detectors

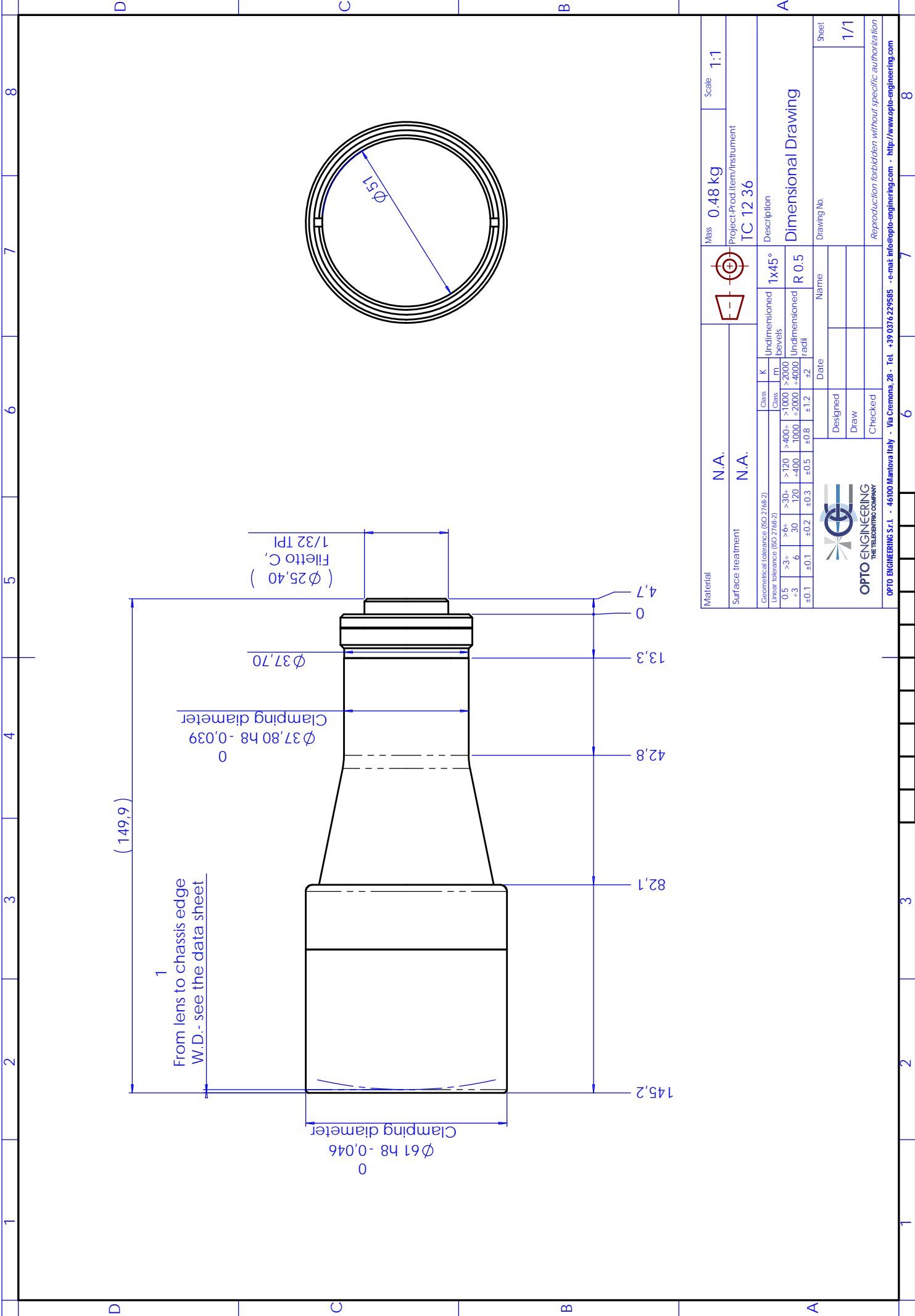
**ACCESSORIES AND OPTIONS:**



**Collimated/Telecentric illumination:**  
Compatible with LTCL36 illuminator;  
green light suggested.



**Clamping Mechanics:**  
Compatible with CMH036.



Material	N.A.		Class	K	Undimensioned bevels	1x45°	Mass	0,48 kg	Scale	1:1
Surface treatment	N.A.		Class	m	Undimensioned	R 0.5	Project-Prod.Item/Instrument	TC 12 36	Description	
Geometrical tolerance (ISO 2768-2)			>120	>400+	>1000	>2000	Dimensional Drawing			
Linear tolerance (ISO 2768-2)			>30-	>6+	>30-	>6+				
0.5			3	6	120	400	Drawing No.			
±0.1			±0.1	±0.2	±0.3	±0.5	Date			
±0.1			±0.1	±0.2	±0.3	±0.5	Designed			
±0.1			±0.1	±0.2	±0.3	±0.5	Draw			
±0.1			±0.1	±0.2	±0.3	±0.5	Checked			
±0.1			±0.1	±0.2	±0.3	±0.5	Sheet			
±0.1			±0.1	±0.2	±0.3	±0.5	1/1			
±0.1			±0.1	±0.2	±0.3	±0.5	Reproduction forbidden without specific authorization			
±0.1			±0.1	±0.2	±0.3	±0.5	OPTO ENGINEERING S.r.l. - 46100 Mantova Italy - Via Crenona, 28 - Tel. +39 0376 229585 - e-mail: info@opto-engineering.com - http://www.opto-engineering.com			