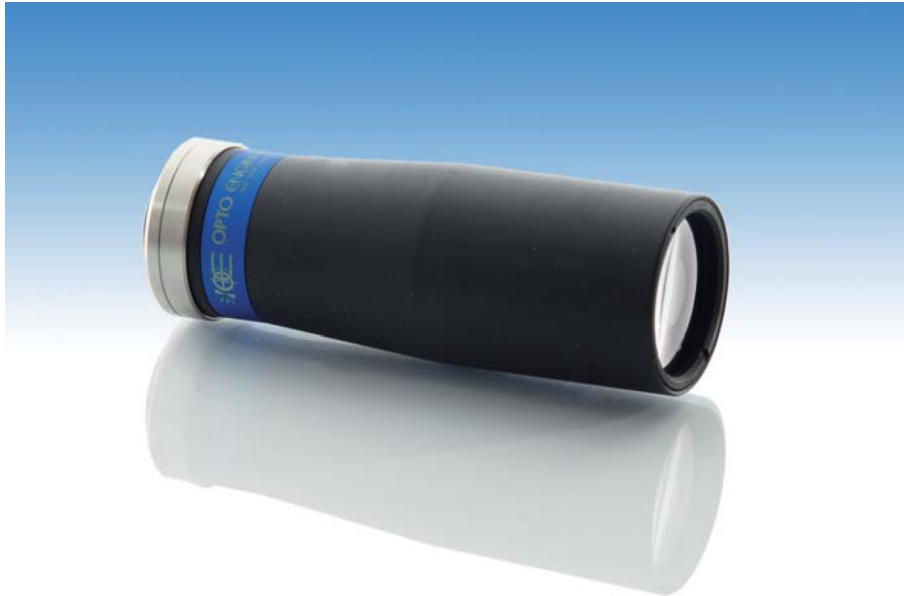




**TC 12 24**

# 0,255x Bi-Telecentric lens for detectors up to 1/2"



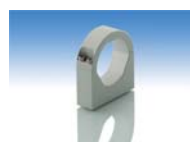
part number		TC 12 24
<b>Magnification</b>		0,255 +/- 3%
<b>Field Of View</b>	(mm x mm)	
with 1/4" (3,6 x 2,7) detector		14,1 x 10,6
with 1/3" (4,8 x 3,6) detector		18,8 x 14,1
with 1/2" (6,4 x 4,8) detector		25,1 x 18,8
with 1/1.8" (7,13 x 5,37) detector		28,0 x 21,1
with 2/3" (8,8 x 6,6) detector		diam. = 25,9
<b>Working Distance</b>	(mm)	69,2 +/- 2
<b>Working F-number</b>		8
<b>Telecentricity</b>	(degree)	< 0,1
<b>Distortion</b>	(%)	< 0,08
<b>Field Depth</b>	(mm)	10,0
<b>CTF @70 lp/mm</b>	(%)	> 45
<b>Image side N.A.</b>		0,0620
<b>Object side N.A.</b>		0,0160
<b>Mount</b>		C
<b>Length</b>	(mm)	117,8
<b>External diameter</b>	(mm)	44,0
<b>Weight</b>	(g)	370

Possible vignetting at the image corners with 1/1.8" detectors

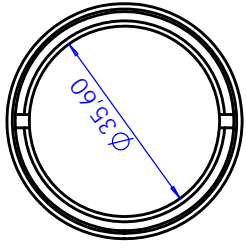
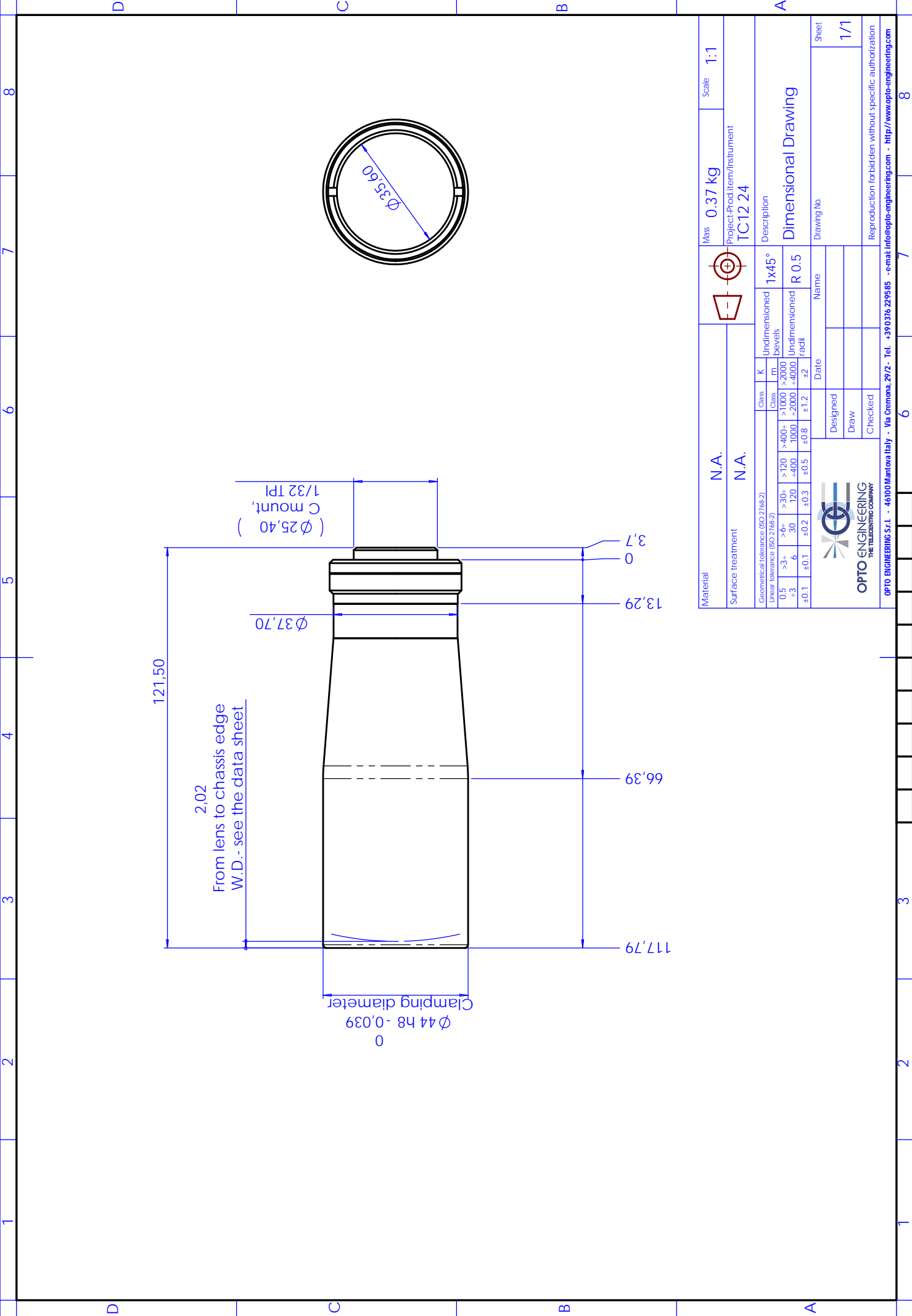
**ACCESSORIES AND OPTIONS:**



**Collimated/Telecentric illumination:**  
Compatible with LTCL24 illuminator;  
green light suggested.



**Clamping Mechanics:**  
Compatible with CMHO24.



Material	N.A.		Class	K	Undimensioned bevels	1x45°	Mass	0,37 kg	Scale	1:1
Surface treatment	N.A.		Class	m	Undimensioned radii	R 0,5	Project-Prod.item/Instrument	TC12 24		
Geometrical tolerance (ISO 2768:2)	>30+	>30-	>120	>400+	>1000	>2000	Description <b>Dimensional Drawing</b>			
Linear tolerance (ISO 2768:2)	0,5	30	120	400	1000	2000				
	-3	6	120	-400	1000	+2000	Drawing No. Sheet 1/1			
	+0,1	+0,1	+0,2	+0,3	+0,5	+0,8				
							Reproduction forbidden without specific authorization <a href="http://www.opto-engineering.com">http://www.opto-engineering.com</a>			



OPTO ENGINEERING S.r.l. - 46100 Mantova Italy - Via Crenoma, 29/2 - Tel. +39 0376 229585 - e-mail: info@opto-engineering.com - <http://www.opto-engineering.com>