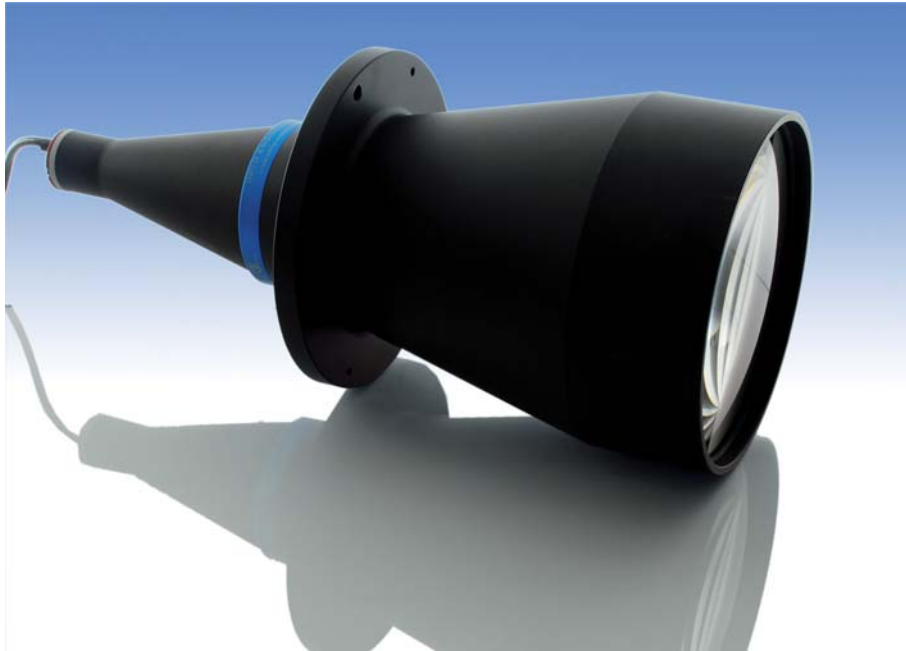


## LT CL 144

# Collimated Illuminator



part number	LT CL 144/X	
<b>Beam Diameter</b>	(mm)	180,0
<b>Available Colours</b>		
/R (red)		x
/G (green)		x
/B (blue)		
/W (white)		
/IR890 (IR, peak 890 nm)		
/IR940 (IR, peak 940 nm)		
<b>Length</b>	(mm)	454,7
<b>Outer Diameter</b>	(mm)	200,0
<b>Compatible Telecentric Lenses</b>		
	TC 13	n.a.
	TC 12	144
	TC 23	130, 144
	TC 4M	130, 144
	TC 2M	144
	TC16M	144
<b>DEVICE POWER RATINGS</b>		
DC Voltage	(volt)	12 to 24
Power Consumption	(watt)	< 2 watt
<b>LED DIRECT DRIVE RATINGS</b>		
<b>for /W, /B and /G versions</b>		
Max Forward DC Voltage	(volt)	3,5
Max Forward Current	(mA)	350
<b>for /R version</b>		
Max Forward DC Voltage	(volt)	2,5
Max Forward Current	(mA)	350
<b>for /IR890 and /IR940 versions</b>		
Max Forward DC Voltage	(volt)	1,6
Max Forward Current	(mA)	500 mA

